

The Growco GR-G Series Gas Turbine Flow Meters are designed with high precision to provide high performance, accuracy and reliability under rugged conditions encountered in the Gas, Petrochemical, Aerospace and other related processing industries.

➤ **TYPICAL FEATURES OF GR-G SERIES:**

- Stable and reliable operations.
- Simple structure and easy maintenance.
- Linearity of +/- 1% of the reading.
- Special end fittings also available.



**Typical Photograph of  
Growco Turbine Meter**

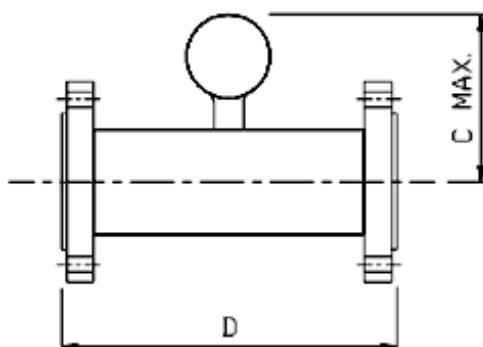
➤ **GENERAL SPECIFICATIONS**

- Parameter : Gas Turbine Meter
- Flow Range : 0.88 to 17000 M<sup>3</sup>/Hr
- Accuracy/Repeatability : Standard Linearity: +/- 1% over normal flow range
- Max Pressure : Threaded Meters - 250 kg/cm<sup>2</sup> (4000 p.s.i.)  
Flanged meters - according to flange rating
- Pressure Drop : Approx. 1 inch w.g. at maximum flow  
(Gas SG 1)
- Temp. Range : -29°C to 70°C (consult us for higher temperatures)
- Enclosure : IP66
- Field Electronics : A range of Pre-amplifiers, F/I converters and local display electronics is available in various certifications.

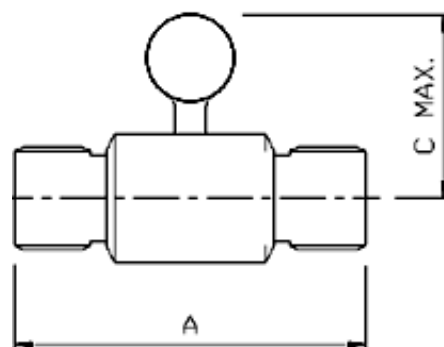
➤ **MODEL SELECTION**

Model No.	Nominal Bore (mm)	Flow Range (m <sup>3</sup> /hr)	Threaded Ends Connection	Flanged Ends Connection	Approx. Dimensions (mm)		
					A	C	D
GR-G-0.75L	15	0.88 – 6.6	3/4"	3/4" / DN20	64	150	127
GR-G-0.75N	15	1.6 - 12	3/4"	3/4" / DN20	64	150	127
GR-G-0.75H	20	3.2 - 24	3/4"	3/4" / DN20	83	150	140
GR-G-1	25	6.4 - 48	1"	1" / DN25	88	200	152
GR-G-1.5	40	10 - 100	1.5"	1.5" / DN40	114	200	178
GR-G-2	50	20 - 200	2"	2" / DN50	132	200	197
GR-G-3	75	40 – 400	N/A	3" / DN80	--	200	254
GR-G-4	100	80 – 800	N/A	4" / DN100	--	300	356
GR-G-6	150	160 – 1600	N/A	6" / DN150	--	300	368
GR-G-8	200	320 - 3200	N/A	8" / DN200	--	350	457
GR-G-10	250	500 - 5000	N/A	10" / DN250	--	350	457
GR-G-12	300	800 - 8000	N/A	12" / DN300	--	400	457
GR-G-16	400	1200 - 12000	N/A	16" / DN400	--	450	610
GR-G-20	500	1700 - 17000	N/A	20" / DN500	--	500	610

**FLANGED METERS**



**THREADED METERS**



**Notes:**

- 1) Threaded connections are available on request.

➤ **CAUTIONS FOR THE INSTALLATION:**

- ❑ Welding slug, foreign particles, etc. in the pipe must be cleared up before the Flow meter is installed.
- ❑ Install the Flow meter correctly.
- ❑ The strainer must be installed at the upstream of the Flow meter with consideration of sufficient upstream and downstream lengths.
- ❑ Please also follow any required local standard recommendations of pipelines installations to ensure compliance to local safety requirements.

➤ **NOTICE WHEN ORDERING:**

- Describe its application
- Specify its model/series or size
- Specify working & maximum pressures
- Specify product & maximum flow rate
- Specify if flanged or threaded connections are required.
- Other useful details or contact us



Typical Photograph of Growco  
Turbine Meter with Local Display

---

**TOTAL MEASUREMENT SOLUTIONS PROVIDER**

---

**Growco®**



Serve Globally, Act Locally®

**GROWCO INTERNATIONAL**

*International Business Office :*

**271 Bukit Timah Road, #03-04 Balmoral Plaza, Singapore 259708**

**Tel : (65) 6842 1170**

**Email: [sales@growco.biz](mailto:sales@growco.biz)**

Distributed by:

**Fax : (65) 6842 1182**

**Web: [www.growco.biz](http://www.growco.biz)**

Growco International reserves the rights, without notice, to alter or improve the designs or specifications of the products described herein.

Printed in Singapore.