

Growco LED Displays are widely used in tanker truck loading terminals or depots for easy viewing of the loading volume when installed with terminal automation system or directly to Growco batch controllers. The LED Series displays are clearly visible in red colour to aid the operators or drivers at such terminals or depots during operations.

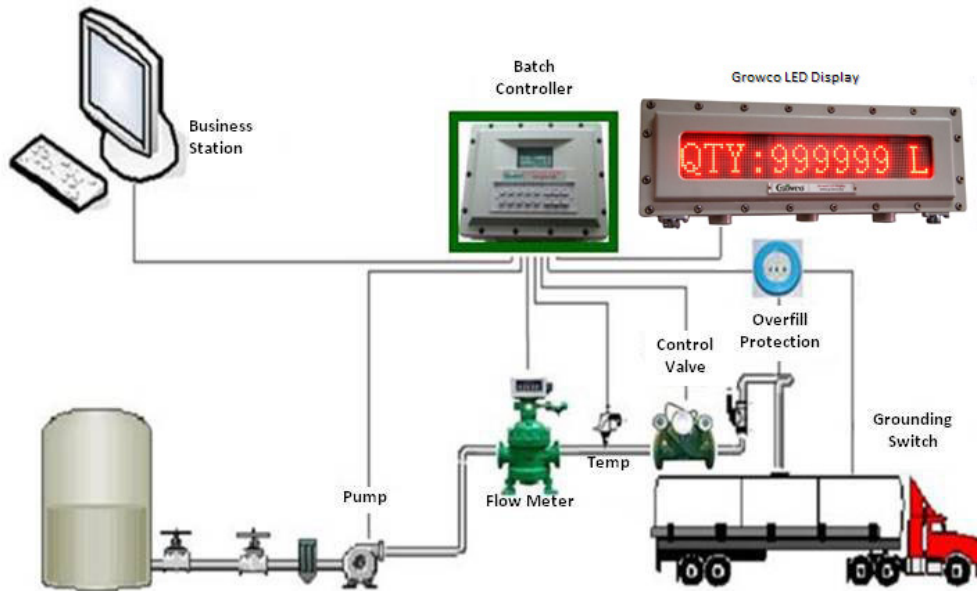


**Above is Typical Photograph of Growco LED Display**

➤ **Standard Features and Specifications :**

- Sharp and clear red colour LED for easy viewing.
- More durable.
- Can display 6 digits of volume.
- Digit height : 76 mm.
- Power consumption : less than 55 watt.
- Communications : RS 485 ; RS 232
- Ambient temperature : -20 °C to +70 °C.
- Relative humidity : up to 90%.
- Power supply : AC 187 ~ 242 V.
- Classification : Exd II BT4.
- Overall dimensions : 600mm (L) x 200mm (H) x 110mm (B).
- Weight : Approx 24 Kg.

# Growco LED Display and Batch Controller in Typical Single Product Loading Application :



➤ **NOTES WHEN ORDERING**

- Specify supply voltage.
- Other useful details or contact us.

**TOTAL MEASUREMENT SOLUTIONS PROVIDER**



Distributed by:

**GROWCO INTERNATIONAL**

*International Business Office :*

*271 Bukit Timah Road, #03-04 Balmoral Plaza, Singapore 259708*

Tel : (65) 6842 1170

Fax : (65) 6842 1182

Email: [sales@growco.biz](mailto:sales@growco.biz)

Web: [www.growco.biz](http://www.growco.biz)

Growco International reserves the rights, without notice, to alter or improve the designs or specifications of the products described herein.

Printed in Singapore.