

The Growco LS Series PD E-Meters in electronic pre-set configurations are designed in single case construction for the general applications. This construction is competitive in pricing and will perform to its stated functions. It is available in flow meter with electronic LCD Display with digital control valve for easy pre-set functions complete with strainer and air release head.



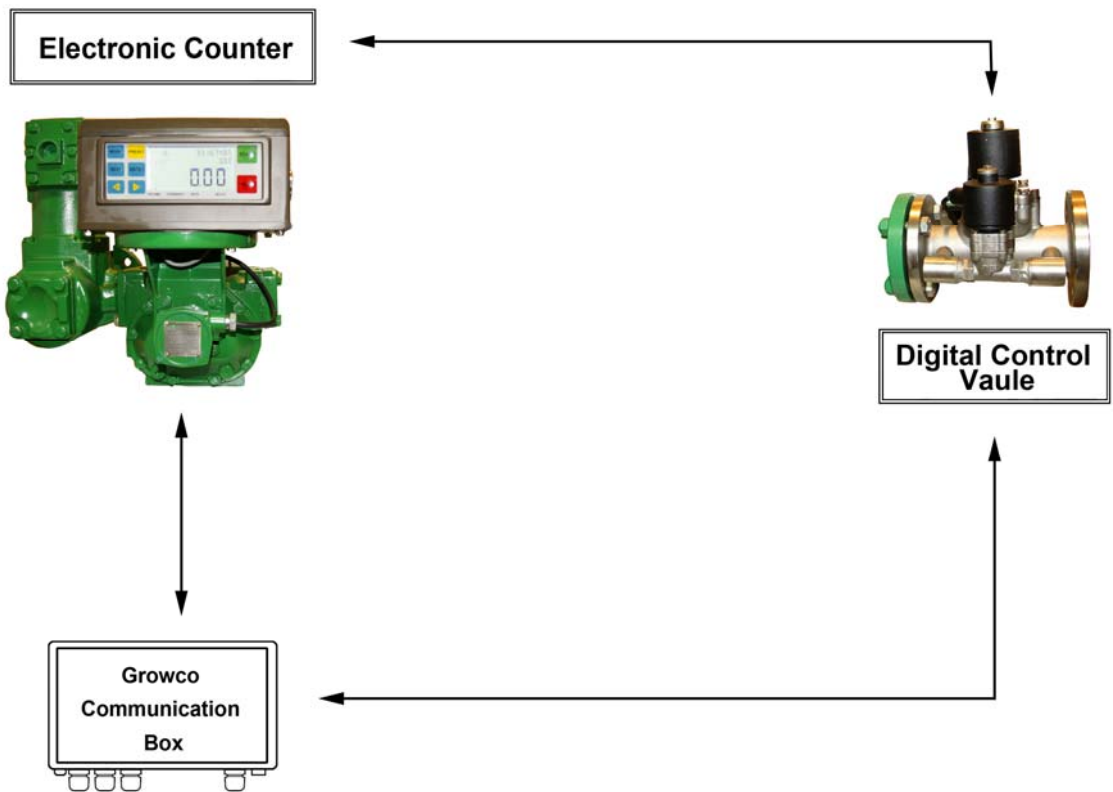
Figure1: Typical Photograph of Growco LS Series Single Case PD E-meters

➤ **APPLICATIONS:**

- Refined Petroleum Products;
- Aviation Gasoline and Jet fuels;
- A wide variety of liquids such as: Corn Oil, Soy Bean Oil, Cotton Seed Oil, etc;
- Please contact us for other liquids not shown above.

Code	SC-50	SC-80
Size	50 mm / 2"	80 mm / 3"
Flow Range (LPM)	20 – 270	40 – 560
Max. Pressure	10 Bar / 150 PSI	
Accuracy	0.2%	
LCD Display	Litre	
Meter Body	Aluminum	
Temp. Range	-20°C to +45°C	
Viscosity Range	30SSU – 2,000SSU (420cSt)	
Power Supply	AC 220Volt	
Classification	Exd II CT5	

Note: For meter constructed either with in-built strainer/air release kit and preset valve, the viscosity is limited similar to diesel, gasoline & kerosene. If high viscosity range of liquid is used, the flow rate and accuracy will be derated accordingly. Consult factory for higher viscosity more than 50 cst.



Growco Communication Box must be installed indoors and away from hazardous area.

Figure 2: Typical Major Components Drawing.

- **NOTICE WHEN ORDERING:**
 - Specify its model or size.
 - Specify working & maximum pressures.
 - Specify product & maximum viscosity.
 - Specify voltage.
 - Other useful details or contact us.

TOTAL MEASUREMENT SOLUTIONS PROVIDER



Distributed by:

GROWCO INTERNATIONAL
International Business Office :
271 Bukit Timah Road, #03-04 Balmoral Plaza, Singapore 259708
Tel : (65) 6842 1170 Fax : (65) 6842 1182
Email: sales@growco.biz Web: www.growco.biz

Growco International reserves the rights, without notice, to alter or improve the designs or specifications of the products described herein.

Printed in Singapore.