

The Growco LS-AE Series air eliminators are designed to eliminate air / gas out from liquid found in the pipeline to protect the downstream equipment such as flow meters, pumps, etc. It is recommended to install the LS-AE on the upstream of the strainer prior to other downstream equipment. The LS-AE series have an air release head built-in at the upper part of the body as an integrated unit to save space and eliminate air / gas in the liquid to improve the performance of the downstream equipment such as flow meters, pumps, etc.

➤ **TYPICAL FEATURES OF LS-AE SERIES:**

- Stable and reliable operations.
- Straight through flow design.
- Simple structure and easy maintenance.
- Horizontal installation.



Photograph of Typical LS-AE Series body with built-in air release head

➤ **PRINCIPLE OF OPERATIONS**

The LS-AE Series utilizes the floating force of air / gas bubbles in the fluid to be measured. When the fluid flowing into the LS-AE Series from the inlet, the fluid containing gas bubbles will rush against the guiding tube mounted in the body and makes an eddy current.

By the effect of the above eddy current, small air / gas bubbles are collected into large ones. The bubbles which have become apart from the liquid will go upward and then flow out from the top of LS-AE.

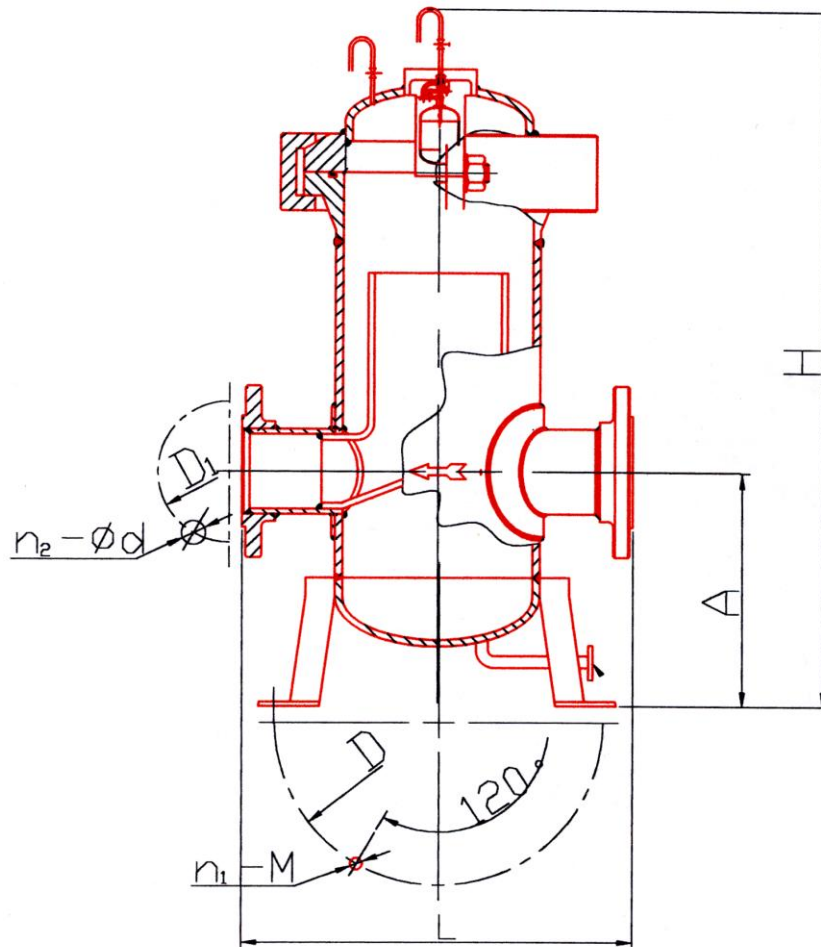
The LS-AE series has an air release head built-in at the upper part of the body. There is a special mechanism inside the air release head to allow air / gas to flow upwards for venting.

➤ **GENERAL SPECIFICATIONS**

Nominal Diameter (mm)*	DN 50 ~ DN 800
Working Fluid *	Petroleum products such as diesel, gasoline, kerosene & crude oil; water or consult factory for other fluids
Nominal Pressure Type*	1.6 ; 2.5 ; 4.0 ; 6.4 MPa
Pressure Loss	≤0.02MPa
Temperature range *	0~+250°C
Viscosity Range *	0.4 ~ 3000 mPa.s
Material of Construction *	Standard : Cast Steel Options : 304 SS & 316 SS

\* **Notes:** 1) Please provides the information during inquiry.

**Typical LS-AE Approximate Dimensions & Data (with air release head):**



Nominal Diameter, DN (mm)	Nominal Pressure (MPa)	Flange Dimensions				Base Dimensions			L (mm)	A (mm)	H (mm)	Approx Weight
		Bolt hole D <sub>1</sub>	screw n <sub>2</sub>	φ d	M	Bolt hole D	Bolt n <sub>1</sub>	M				kg
50	1.6	125	4	18	M16	310	3	M16	320	237	705	40
	2.5、4.0	125	4	18	M16	310	3	M16				45
80	1.6	160	8	18	M16	335	3	M16	420	260	830	65
	2.5、4.0	160	8	18	M16	335	3	M16				70
100	1.6	180	8	18	M16	335	3	M20	520	315	1060	120
	2.5、4.0	190	8	23	M20	335	3	M20				125
150	1.6	240	8	23	M20	520	3	M20	720	500	1200	180
	2.5、4.0	250	8	25	M22	520	3	M20				188
200	1.6	295	12	23	M20	634	3	M20	800	538	1530	480
	2.5	310	12	25	M22	634	3	M20				490
	4.0	320	12	30	M27	634	3	M20				505
250	1.6	355	12	25	M22	658	3	M20	1000	580	1620	1300
	2.5	370	12	30	M27	658	3	M20				1330
	4.0	385	12	34	M30	658	3	M20				1375
300	1.6	410	12	25	M22	670	3	M22	1100	1070	2130	1750
	2.5	430	16	30	M27	670	3	M30				1800
	4.0	450	16	34	M30	670	3	M30				1880
350	1.6	470	16	25	M22	750	3	M30	1300	1100	2360	2000
	2.5	490	16	34	M30	750	3	M30				2150
400	1.6	525	16	30	M27	800	3	M30	1600	1100	2400	2480
	2.5	550	16	34	M30	800	3	M30				2580
500	1.6	650	20	34	M30	950	3	M30	2000	1150	2400	2600
	2.5	660	20	41	M36	950	3	M30				2720
600	1.6	770	20	41	M36	1100	3	M30	2200	1150	2500	2800
	2.5	770	20	41	M36	1100	3	M30				2950
700	1.6	840	24	41	M36	1350	3	M30	2500	1150	3000	3000
	2.5	875	24	48	M42	1350	3	M30				3200
800	1.6	950	24	41	M42	1500	4	M36	2700	1250	3000	3300
	2.5	990	24	48	M42	1500	4	M36				3500

**Notes:**

- 1) DN\* - Nominal Diameter based on flange connection. Consult us when necessary.
- 2) All dimensions and weights shown in above table are approximate for reference only.



### CAUTIONS FOR THE INSTALLATION:

- ❑ Welding slug, foreign particles, etc. in the pipe must be cleared up before the Air Eliminator is installed.
- ❑ Install the air eliminator correctly (e.g. Horizontally).
- ❑ The air eliminator must be installed at the upstream of the Strainer prior to the Flow meter.
- ❑ Please also follow any required local standard recommendations of pipelines installations to ensure compliance to local safety requirements.

### ➤ NOTICE WHEN ORDERING:

- Describe its application.
- Specify its model/series or size.
- Specify working & maximum pressures.
- Specify product & maximum viscosity.
- Specify horizontal installation.
- Other useful details or contact us.

---

**TOTAL MEASUREMENT SOLUTIONS PROVIDER**  
**Member of Singapore Manufacturing Federation (Since 1932)**

---



**GROWCO INTERNATIONAL**  
**International Business Office :**

**271 Bukit Timah Road, #03-04 Balmoral Plaza, Singapore 259708**

**Tel : (65) 6842 1170**

**Email: [sales@growco.biz](mailto:sales@growco.biz)**

**Distributed by:**

**Fax : (65) 6842 1182**

**Web: [www.growco.biz](http://www.growco.biz)**

Growco International reserves the rights, without notice, to alter or improve the designs or specifications of the products described herein.

Origin of Singapore.