

The Growco RTI Series Remote Tank Indicators are designed with high technology integrated circuitry to ensure high precision and rugged construction for long term reliability. It has the local display functions to showing liquid level, temperature, volume, density and others when configured accordingly. These RTI Series Remote Tank Indicators use industry standard communication protocols which make them to have easy access to the DCS systems or other common control devices. The RTI Series are used widely for tanks in the oil storage tanks terminals, refineries, petrochemical complex as well as industries such as foodstuff, chemical, water treatments plants, etc.

➤ **FEATURES:**

- Unique design of high technology integrated circuitry;
- Ability to display the liquid level, temperature, density, and others;
- High Accuracies. The measurement accuracy of liquid level is +/- 2mm, the temperature accuracy is +/- 0.5°C;
- Communication protocol of industry standard via RS485;
- Can be connected to servo or radar gauges;
- Use power supply of 24 VDC;
- Light weight;
- Simple installation;



**Typical Photograph of
Growco Remote Tank Indicator**

➤ **TYPICAL SPECIFICATIONS**

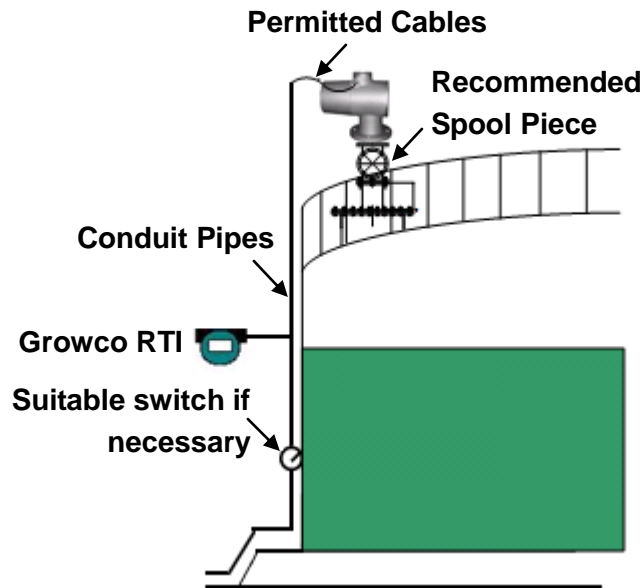
- Liquid level accuracy : ± 1 mm
- Temperature accuracy : $\pm 0.5^{\circ}\text{C}$
- Environment temperature : -40 to $+70^{\circ}\text{C}$
- Classifications : Exd IIBT4
- Enclosure : IP65
- Electrical supply : 24VDC
- Output : RS485
- Input : HART, 4 - 20mA, RS485
- Approximate Weight : $< 1.2\text{Kg}$
- Approximate Size : Dia. 100mm x 170mm
- Cable outlet : $2 \times 1/2\text{NPT}$
- Can be used with our GTG series servo gauges or radar gauges.

➤ **SOME POSSIBLE INSTALLATION ARRANGEMENTS:**

The Growco RTI can be used for various installation arrangements such as:

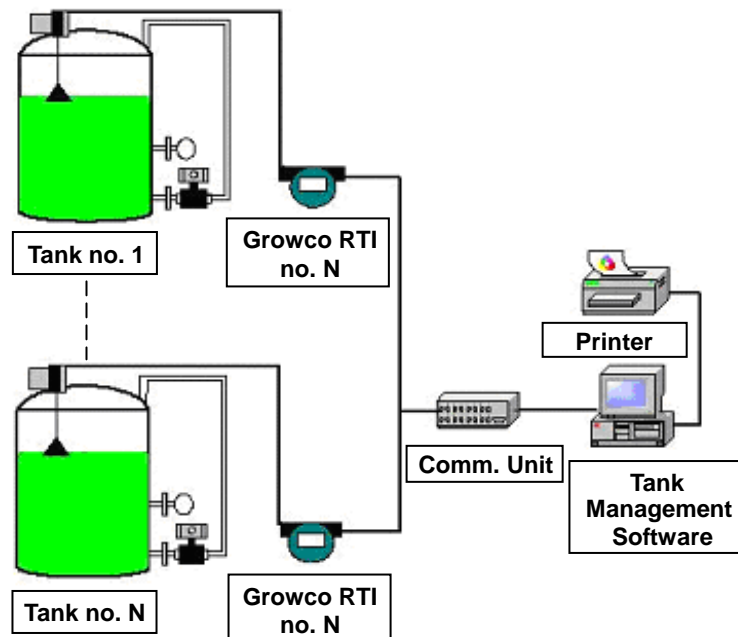
- 1) For installation with Single Tank Gauge as below.

Typical arrangement for use with Single Tank Gauge



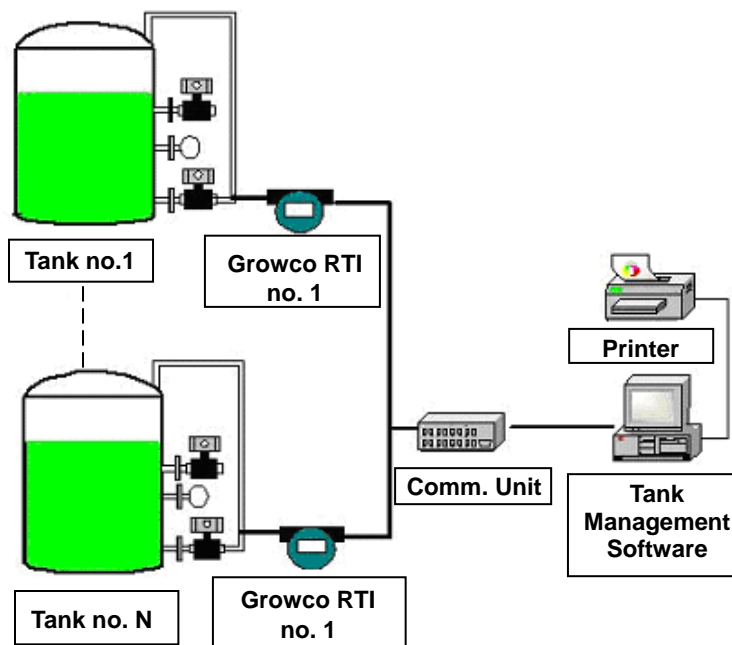
- 2) For Installation of combined Tank Gauges and Pressure Transmitters as below.

Typical arrangement for use with Servo Tank Gauges and Pressure Transmitters



3. For installation of static pressure arrangement as below.

Typical arrangement for use with pressure transmitters



- **Growco Remote Tank Indicator** can be used with some measurement allocations by the Tank Measurement and/or Inventory Management softwares to set up various measurement methods including simple static pressure, standard static pressure, the mixed ways and the others. And it can also achieve the aim of automatic measurement and safety alarms.

➤ **NOTES WHEN ORDERING:**

- Describe its application.
- Specify its model.
- Specify working & max. Pressures.
- Specify product & max. viscosity.
- Specify min. & max. temperatures.
- Specify tanks heights & diameters.
- Specify type of tanks (ie, fixed roof, floating roof, etc).
- Specify voltage.
- Other useful details or contact us.

TOTAL MEASUREMENT SOLUTIONS PROVIDER
Member of Singapore Manufacturing Federation(Since1932)



Serve Globally, Act Locally ©

GROWCO INTERNATIONAL
International Business Office :

271 Bukit Timah Road, #03-04 Balmoral Plaza, Singapore 259708

Tel : (65) 6842 1170

Email: sales@growco.biz

Distributed by:

Fax : (65) 6842 1182

Web: www.growco.biz

Growco International reserves the rights, without notice, to alter or improve the designs or specifications of the products described herein.

Origin of Singapore.