

TOTAL MANAGEMENT SOLUTION OF DELIVERY, SALE AND INVENTORY FOR SERVICE OR PETROL STATIONS' UNDERGROUND TANKS AND OTHER SHORTER HEIGHTS ABOVE GROUND TANKS.

- Automatically monitor petroleum liquid level, water level and temperature in the tanks.
- Display the following:
 - Delivery report
 - Inventory report
 - Shift report
 - Alarm report
- Customized alarm set:
 - High oil level, low oil level
 - High water level
 - High temperature

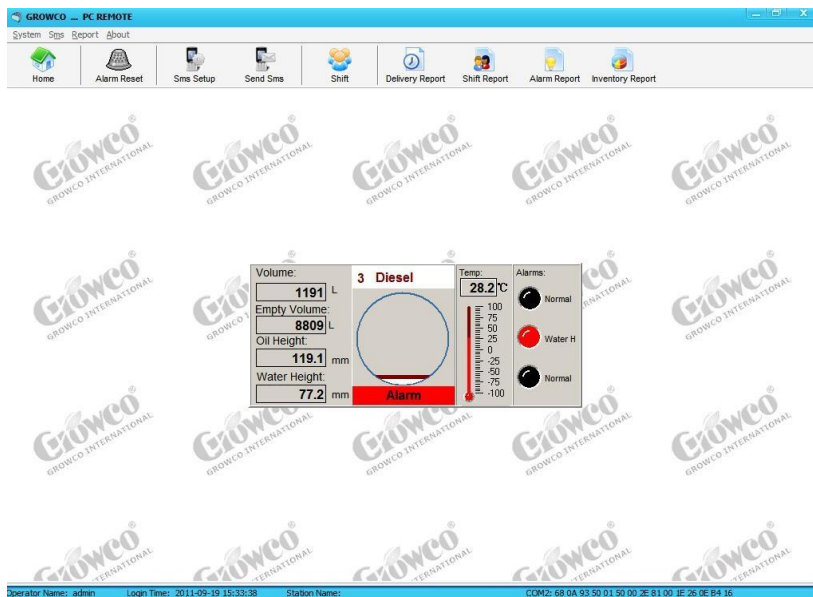
Safety and environment protection

- Overfill alarm & SMS alerts

Friendly operating interface

- Smart Console Box
- User friendly PC Remote Software
- English language

**SMART CONSOLE BOX WITH USER FRIENDLY PC
REMOTE SOFTWARE (Computer not included)**



Typical Photograph of Smart Magnetostrictive Probe



Typical Photograph Of Smart Console Box With User Friendly PC Remote Software

Technical Parameters:

- Power supply: AC220V ±10%, 0.1A, 50HZ
- Operating temperature: -20°C ~ +60°C
- Relative humidity: 0 ~ 90%

- Size of console: 300 mm x 230 mm x 145 mm
- Monitoring up to 9 tanks, 6 tanks standard
- Communication port: RS-232

MAGNETOSTRICTIVE PROBE

Technical Parameters:

- Power supply: DC10 ~ 15V, 35 mA
- Measurement accuracy: ± 0.5 mm
- Repeatability: ± 0.2 mm
- Operating temperature: -40°C ~ 70°C
- Height range for oil level: 105 mm ~ 3700 mm
- Classification: Ex iaIIAT4



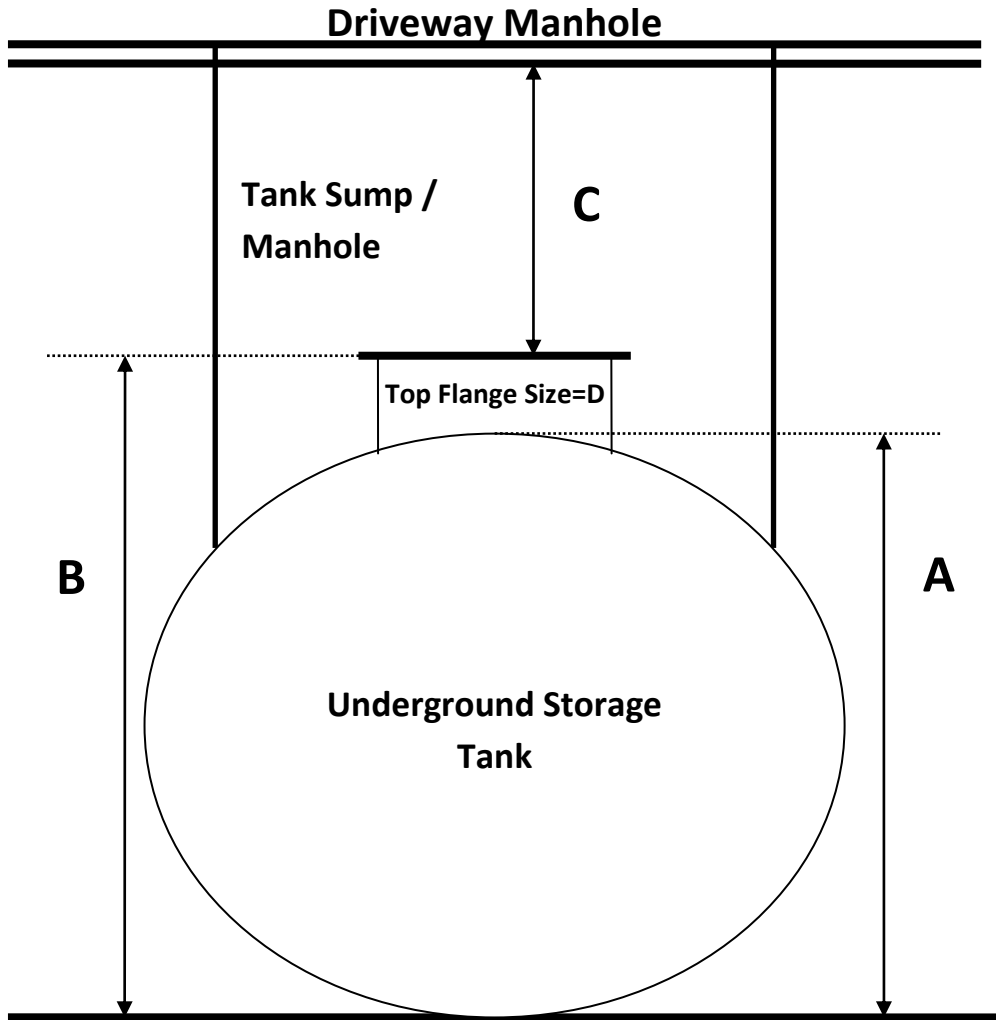
Growco UTG Series Smart Magnetostrictive Probes

A TOTAL MANAGEMENT SOLUTION

The smart console can monitor the relevant information independently and be able to communicate with the petrol stations' POS for full retail automation with its head office for easy monitoring of their remote petrol stations.

Please provide the following details in order to properly size the smart probe length :

- A: Tank Inner Diameter = ? (ft or m)
- B: Distance from Bottom of Tank to Top of Flange Cover = ? (ft or m)
- C: Distance from Top of Flange Cover to Bottom of Driveway Manhole Cover = ? (ft or m)
- D: Opening Diameter of Top Flange Size (inches?) or Underground Storage Tank = ? (in or mm)



TOTAL MEASUREMENT SOLUTIONS PROVIDER
Member of Singapore Manufacturing Federation(Since1932)



GROWCO INTERNATIONAL
International Business Office :
271 Bukit Timah Road, #03-04 Balmoral Plaza, Singapore 259708
Tel: (65) 6842 1170
Email: sales@growco.biz

Distributed by:

Fax: (65) 6842 1182
Web: www.growcoin.net

Growco International reserves the rights, without notice, to alter or improve the designs or specifications of the products described herein.

Origin of Singapore.