

The Growco GR-L Series Liquid Turbine Flow Meters are typically used as standalone flow meters or used together with batch controllers or PLC for loading of products used in trucks loading terminals, barge loading terminals, rail cars, or related processing installations.

➤ **TYPICAL FEATURES OF GR-L SERIES:**

- Stable and reliable operations.
- Simple structure and easy maintenance.
- Special end fittings also available.



Typical Photograph of Growco Turbine Meter

➤ **GENERAL SPECIFICATIONS**

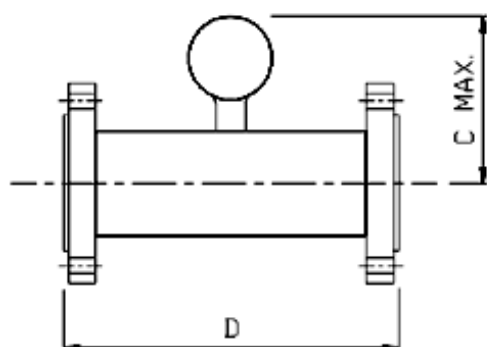
- Parameter : Liquids Turbine Meter
- Flow Range : 0.11 to 7000 M³/Hr
- Accuracy : Standard type : Linearity* +/-0.5% over stated flow range
Premium type : Linearity* +/-0.15% over stated flow range and limited to size 4" to 16" only (Custody Transfer) (See Note*)
- Max Pressure : Threaded Meters - 250 kg/cm² (4000 p.s.i.)
Flanged meters - according to flange rating
- Pressure Drop : Approx. 0.28 kg/cm² (4 psi) at maximum flow (SG 1, Viscosity 1 cst)
- Temp. Range : -29°C to 70°C (consult us for higher temperatures)
- Enclosure : IP66
- Field Electronics : A range of Pre-amplifiers, F/I converters and local display electronics is available in various certifications.

*Note: * The linearity can be improved to better value by Linearization in Batch Controller and on site calibration over limited/required range.*

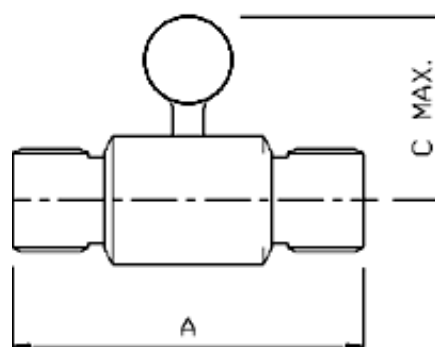
MODEL SELECTION

Model No.	Nominal Bore (mm)	Flow Range (m ³ /hr)	Threaded Ends Connection	Flanged Ends Connection	Approx. Dimensions (mm)		
					A	C	D
GR-L-0.5	10	0.11 - 1.1	1/2"	1/2" / DN15	64	150	127
GR-L-0.75L	15	0.22 - 2.2	3/4"	3/4" / DN20	64	150	127
GR-L-0.75N	15	0.4 - 4	3/4"	3/4" / DN20	64	150	127
GR-L-0.75H	20	0.8 - 8	3/4"	3/4" / DN20	83	150	140
GR-L-1	25	1.6 - 16	1"	1" / DN25	88	200	152
GR-L-1.5	40	3.4 - 34	1.5"	1.5" / DN40	114	200	178
GR-L-2	50	6.8 - 68	2"	2" / DN50	132	200	197
GR-L-3	75	13.5 - 135	N/A	3" / DN80	--	200	254
GR-L-4	100	27 - 270	N/A	4" / DN100	--	300	356
GR-L-6	150	55 - 550	N/A	6" / DN150	--	300	368
GR-L-8	200	110 - 1100	N/A	8" / DN200	--	350	457
GR-L-10	250	190 - 1900	N/A	10" / DN250	--	350	457
GR-L-12	300	270 - 2700	N/A	12" / DN300	--	400	457
GR-L-16	400	400 - 4000	N/A	16" / DN400	--	450	610
GR-L-20	500	700 - 7000	N/A	20" / DN500	--	500	610

FLANGED METERS



THREADED METERS



Notes:

- 1) Threaded connections are available on request.
- 2) Custody Transfer Types are available on request.

➤ **CAUTIONS FOR THE INSTALLATION:**

- ❑ Welding slug, foreign particles, etc. in the pipe must be cleared up before the Flow meter is installed.
- ❑ Install the Flow meter correctly.
- ❑ The strainer must be installed at the upstream of the Flow meter with consideration of sufficient upstream and downstream lengths.
- ❑ Please also follow any required local standard recommendations of pipelines installations to ensure compliance to local safety requirements.

➤ **NOTICE WHEN ORDERING:**

- Describe its application
- Specify accuracy type
- Specify its model/series or size
- Specify working & maximum pressures
- Specify product & maximum viscosity
- Specify if flanged or threaded connections are required.
- Other useful details or contact us



Typical Photograph of Growco Turbine Meter with Local Display

TOTAL MEASUREMENT SOLUTIONS PROVIDER
Member of Singapore Manufacturing Federation (Since 1932)



Serve Globally, Act Locally®

GROWCO INTERNATIONAL

International Business Office :

271 Bukit Timah Road, #03-04 Balmoral Plaza Singapore 259708

Tel : (65) 6842 1170

Email: sales@growco.biz

Fax : (65) 6842 1182

Web : www.growco.biz

Distributed by:

Growco International reserves the rights, without notice, to alter or improve the designs or specifications of the products described herein.

Origin of Singapore.